

# KA-1300RX



\*Traveling position in working site

<http://www.kato-works.co.jp>

- Study and follow the local regulation for driving position regarding mounting of Superstructure, Boom, Fly jib and Counter weight.
- Before you use the crane, study the instruction manual thoroughly and follow the instructions it contains.
- Some differences may arise between the machine delivered and the photographs in the catalog due to the country the crane will be used in or any added improvements.
- Note : The specification may be changed without notice.
- The actual colors of the body and interior may appear slightly different from those shown in this catalogue due to the limitations of photography and printing.

● Contact for enquiry:



KA-1300RX

9-37, Higashi-ohi 1-chome, Shinagawa-ku, Tokyo, 140-0011, Japan / Tel.: Head Office: Tokyo (03) 3458-1111 Overseas Marketing Department: Tokyo (03) 3458-1115 / FAX: Tokyo (03) 3458-1163

# KA-1300RX ALLTERR



\*Traveling position in working site

# KATO

# KA-1300RX

## ALLTERR

Advanced ALLTERR  
Various operations

- **New counterweight configurations**  
Stability has increased, maximum 24 ton, 16 ton, 8.5 ton counterweight is selectable.
- **Removable SL Jib**  
“Jib mounted” “Jib removed” “Jib side stow” 3-mode lifting capacity is selectable.
- **New engine for superstructure**  
Adopt clean and reliable Mercedes-Benz engine.
- **Touch panel type information display**  
Various crane information is available on display, including fuel information.
- **New winch system**  
High speed lowering mode has been adopted.
- **Both left-hand drive and right-hand drive are available for chassis**





**New counterweight configurations  
4.1 m tail slewing radius with full counterweight equipped on crane**

1 Weight on carrier specification  
Tail slewing radius: 3.28 m



3.28m tail slewing radius is one of the shortest among this class of mobile crane

2 8.5 ton weight specification  
Tail slewing radius: 3.89 m



3 16 ton weight specification  
Tail slewing radius: 4.1 m



4 24 ton weight specification  
Tail slewing radius: 4.1 m



**48m x 1.9 ton with 24 ton weight  
without SL Jib**



2~60°

9.2~26.6m

11.8~52m

-1.8~85°

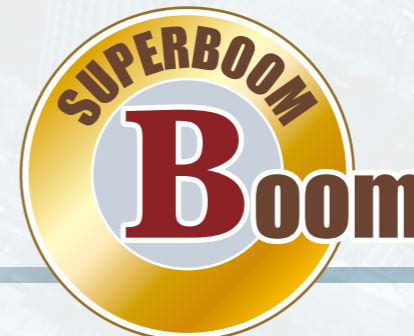


**4-section high tensile steel  
round-shaped SL Jib**



Jib lifting capacity	
Jib length	9.2m~26.6m
Maximum rated lifting height	79.6m
44m+9.2mSL (5°) at 18m working radius	7.0t
52m+26.6mSL (2°) at maximum rated lifting height	2.0t
(Performance is same up to 30m working radius)	
52m+26.6mSL (45°) at 58m working radius	0.7t

SL Jib removed boom specification is selectable  
Correspond to various working sites



**6-section SUPERBOOM**

Strong and reliable speedy extension/retraction may approach to any working site flexible

**High rigidity by round-shaped boom**

Boom lifting capacity	
Maximum rated lifting capacity	130t x 2.5m
Boom length	11.8m~52.0m
Maximum rated lifting height	53.1m
Boom derricking angle	-1.8~85°
Maximum rated lifting capacity (fully extended)	12.0t



Safety, Comfortable & Advanced functions

# OPERATION CABIN Cabin



\*Display is composite picture

▲Cabin

## Wide visibility, easy control levers position provide comfortable operator's working environment.

- Configuration of control levers are common to the KATO's rough terrain crane. An operator of rough terrain crane will like most his habitually used lever configuration.
- Hydraulic pilot type of operation control levers enable both smooth fine-operation and rapid operation.
- Panoramic wide visibility is provided with wide roof window.

## Equipped with tilting Operator's cabin.

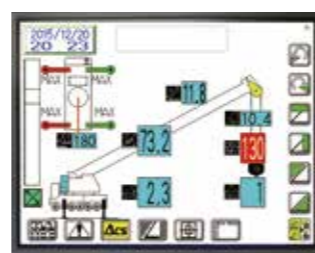
- The operator's cabin can be tilted from **0 to 15** degree. Very comfortable and healthy for the operator during high lifting height operation.

## KATO's latest Safe Load Indicator (ACS) is equipped.

- Touch panel type color display with multi functional system.
- It enables to indicate hook height to facilitate operator's task.
- Working range limiter can be set by the Crane's position as well as value of distance/angle.



▲Tilting cabin



▲Touch panel type color display

# PROGRESSIVE PARTS Equipments

## Other equipments for the safety and the better workability



▲Anemometer



▲Slide step (cab)



▲Adjustable suspension seat



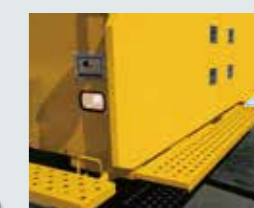
▲Lamp for slewing bearing (at maintenance)



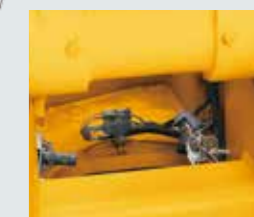
▲Left side view camera



▲ACS outside indicator



▲Slide step



▲Rotary brush lamp



\*Traveling position in working site

## 6-position outriggers



- Minimum extended 3.4m
- Intermediately extended 4.4m
- Intermediately extended 5.4m
- Intermediately extended 6.4m
- Intermediately extended 7.4m
- Fully extended 8.4m

# KATO CARRIER Carrier

Original designed carrier for crane



▲Left and right hand drive are selectable

## Touch panel type information display

- Operator can save fuel consumption by checking fuel efficiency and working time on display.
- ECO switch controls engine speed to save fuel and reduce noise during operation.

