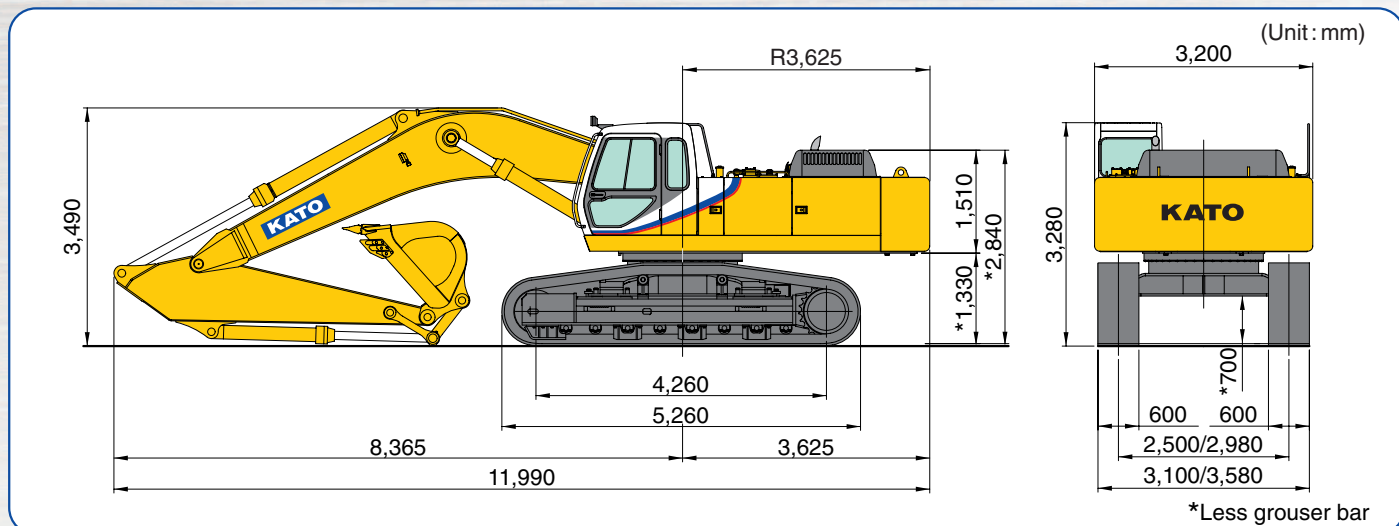


Dimensions



SUPER EXCEED

HD2045II

FULLY HYDRAULIC EXCAVATOR

Bucket capacity: 1.4m³ - 2.3m³ (ISO)
 Engine output: 235kW/2,000min⁻¹ (ISO Net)
 Operating weight: 46,200kg



NOTE : Illustrations may include optional equipment. KATO products and specifications are subject to improvements and changes without notice.

Address inquiries to :



KATO WORKS CO.,LTD.

9-37, Higashi-ohi 1-chome, Shinagawa-ku, Tokyo 140-0011, Japan.
 Tel. : Head Office Tokyo(03)3458-1111
 Overseas Marketing Department Tokyo(03)3458-1115
 Fax. : Tokyo(03)3458-1152
 URL <http://www.kato-works.co.jp>

Option specification

Powerful Machine Harmonized with Your Demands



High Power & Speedy Operation

Digging force Arm:
184kN (with High Power: 216kN)
Bucket: 247kN (with High Power: 276kN)

Powerful New Engine

Max Output: 235kW/2,000min⁻¹(ISO Net)
Max Torque: 1,245N·m/1,200min⁻¹(ISO Net)
Comply with the latest emission control

Durable Structure

Heavy duty reinforced front structure offers steady & durable operations
All around 360° well balanced operation with expandable square shape lower undercarriage

High efficiency Cooling System

High performance radiator and aluminum oil cooler with easier access for cleaning to keep radiators fresh always

Fatigue Free & Comfortable Cabin

Auto air conditioner
UV-cut glass
Mono piece big & wide side window
Wide range adjustable seating position
Anti-static-electricity fabric seat

Easier Maintenances and More

Technical Specifications

ENGINE

Model Mitsubishi 6D24-TLE2A, 4 cycle intercooler turbo charged diesel engine
 Number of cylinders 6
 Bore & Stroke 130mm x 150mm
 Total displacement 11.94 L
 Rated output 235kW/2,000min⁻¹ (ISO Net)
 Max. torque 1,245N·m/1,200min⁻¹ (ISO Net)
 Compression ratio 17.5:1
 Combustion system Direct injection
 Specific fuel consumption 221g/kW-hour
 Cooling system Pressurized water circulated by a centrifugal pump with thermostat
 Lubrication system Pressurized oil fed by a gear pump through full-flow and by-pass cartridge filter
 Starter Electric, 24V-7.0kW
 Generator Alternator, 24V-50A
 Governor Electric
 Air cleaner Dry type filter

HYDRAULIC SYSTEM

Pumps Double variable piston pump and gear pump
 Max. discharge flow 2 x 370L/min
 Max. discharge pressure 24.9MPa
 Max. discharge pressure (travel circuit only) 30.9MPa
 Oil filtration Full-flow filter with replaceable element, a drain cartridge filter, a pilot line filter and a suction strainer
 Control valve 5 + 5 section multiple control valve (with one free service circuit)
 Pilot pump Gear type
 Oil cooler Finned tube, forced ventilation
 Pressure relief valves Primary and secondary on each circuit

CAB & CONTROLS

Type All weather sound suppressed, 1,000mm wide pressed steel cab mounted on 6 point viscourse mounting.
 Right hand lever Controls the boom & bucket
 Inner right hand lever (with foot pedal) Controls the right hand track
 Inner left hand lever (with foot pedal) Controls the left hand track
 Left hand lever Controls the arm & swing
 Pilot control Travel, boom, arm, bucket and swing
 Engine throttle Electric "Accel dial"
 Meter & gauges Hour meter, water temperature and fuel level
 Monitor display Engine oil pressure, engine oil filter, hydraulic oil filter, hydraulic oil temperature, water temperature, water level, fuel level, battery charge, APC monitor and air cleaner.
 Indicator lamps Caution lamp & Engine preheater indicator lamp & Engine diagnosis lamp
 Working lights Provided on the boom left side and mounted on the frame
 Lubrication chart Inside the tool box



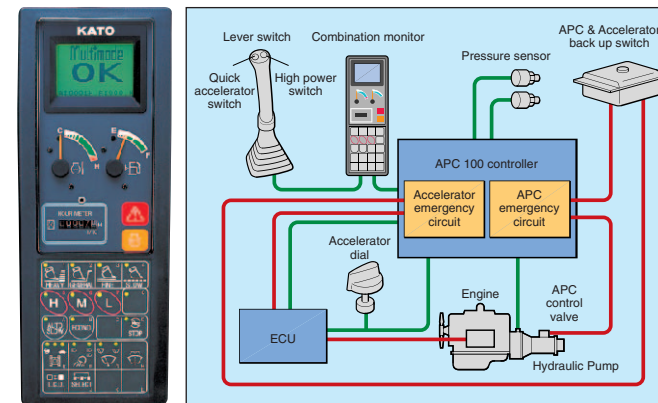
Option specification

SWING SYSTEM

Drive Two axial piston motors with reduction gear.
 Brake A hydraulic brake that locks automatically when the swing control lever is in the neutral position and a mechanical parking brake which is applied when the safety lock lever is pulled backwards, the engine is turned off or the swing control lever is in the neutral position.
 Lubrication Completely housed and grease bathed
 Max. swing speed 9.1min⁻¹
 Tail swing radius 3,625mm
 Min. front swing radius 4,860mm

BOOM, ARM AND BUCKET

Boom cylinders Two, double acting
 Bore & Stroke 180mm x 1,683mm
 Arm cylinder One, double acting
 Bore & Stroke 190mm x 1,990mm
 Bucket cylinder One, double acting
 Bore & Stroke 170mm x 1,278mm
 Lubrication Grease nipples, with centralized greasing for remote points
 Bucket digging force 247kN (High power) 276kN
 Arm digging force 184kN (High power) 216kN (High power can be used with STD arm and short arm)



Combination monitor

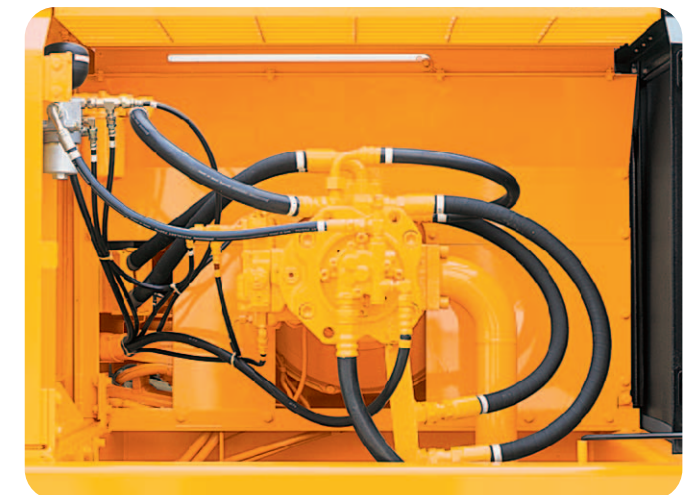
"APC" system

SERVICE DATA

Fuel tank 605 L
 Cooling system 49 L
 Engine oil 49 L
 Track drives 2 x 21 L
 Swing drive 2 x 11.3 L
 Hydraulic oil tank (level) 329 L (system) 610 L
 In standard figure, with the 3.45m arm, 600mm grouser shoes and 2.0m³(ISO) bucket.
 Operating weight 46,200kg
 Ground pressure 82kPa

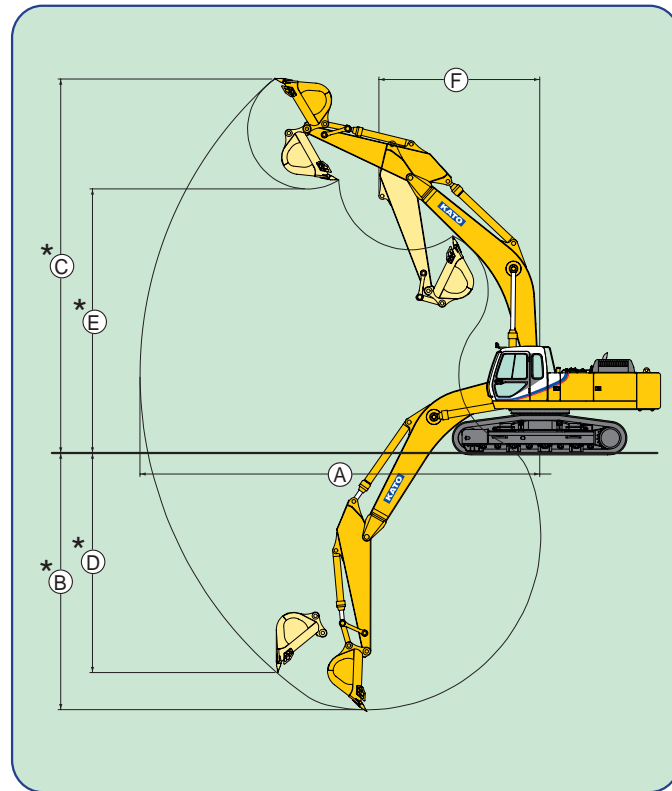
TRAVEL SYSTEM

Drive Independent axial piston motor with reduction for each side
 Brakes Independent disk parking brake for each side, applied automatically when the travel levers are in the neutral position.
 Track shoes 51 each side
 Track adjustment Grease cylinders with recoil springs
 Lubrication Sealed-for-life rollers and front idlers with floating seals
 Travel speed High 0 ~ 5.0km/h
 Medium 0 ~ 3.0km/h
 Low 0 ~ 2.2km/h
 Gradeability 70% (35°)
 Max. drawbar pull 392kN
 Ground clearance (less grouser bar) 700mm
 Track length 5,260mm



Fire wall

Working Ranges

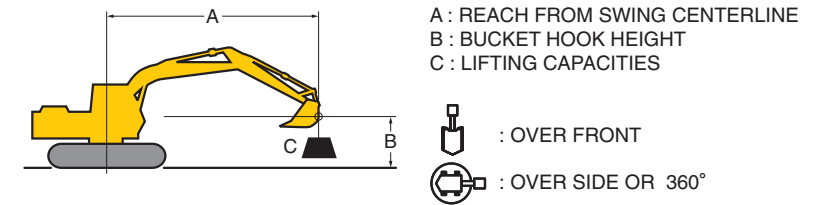


(Unit : mm)

| Range | Arm | Short Arm (2.95m) | STD Arm (3.45m) | Long Arm (4.95m) |
|------------------------|-----|-------------------|-----------------|------------------|
| A-Max. digging radius | | 11,640 | 12,080 | 13,430 |
| *B-Max. digging depth | | 7,260 | 7,760 | 9,250 |
| *C-Max. digging height | | 11,080 | 11,300 | 11,800 |
| *D-Max. vertical wall | | 5,880 | 6,630 | 8,120 |
| *E-Max. dumping height | | 7,800 | 7,970 | 8,480 |
| F-Min. swing radius | | 5,050 | 4,860 | 4,840 |

*Less grouser bar.

Lifting Capacities



HD2045III 600mm Shoe, 7.00m Boom, 3.45m Arm, 2.0m³ Bucket (1,780kg) Unit: 1,000kg

| LIFT POINT HEIGHT B (m) | LIFT POINT RADIUS A (m) | | | | | | | | | | | | | | | | AT MAXIMUM LIFT POINT RADIUS | | | | | | |
|-------------------------|-------------------------|-------------------|------------|-------------------|------------|-------------------|------------|-------------------|------------|-------------------|------------|-------------------|------------|-------------------|------------|-------------------|------------------------------|-------------------|------------|-------------------|---|--|--|
| | 2.00 | | 3.00 | | 4.00 | | 5.00 | | 6.00 | | 7.00 | | 8.00 | | 9.00 | | 10.00 | | | | | | |
| | OVER FRONT | OVER SIDE OR 360° | OVER FRONT | OVER SIDE OR 360° | OVER FRONT | OVER SIDE OR 360° | OVER FRONT | OVER SIDE OR 360° | OVER FRONT | OVER SIDE OR 360° | OVER FRONT | OVER SIDE OR 360° | OVER FRONT | OVER SIDE OR 360° | OVER FRONT | OVER SIDE OR 360° | OVER FRONT | OVER SIDE OR 360° | OVER FRONT | OVER SIDE OR 360° | m | | |
| 8.00 | | | | | | | | | | | | | | | | | | | | | | | |
| 7.00 | | | | | | | | | | | | | | | | | | | | | | | |
| 6.00 | | | | | | | | | | | | | | | | | | | | | | | |
| 5.00 | | | | | | | | | | | | | | | | | | | | | | | |
| 4.00 | | | | | | | | | | | | | | | | | | | | | | | |
| 3.00 | | | | | | | | | | | | | | | | | | | | | | | |
| 2.00 | | | | | | | | | | | | | | | | | | | | | | | |
| 1.00 | | | | | | | | | | | | | | | | | | | | | | | |
| 0.00 | | | | | | | | | | | | | | | | | | | | | | | |
| -1.00 | | | | | | | | | | | | | | | | | | | | | | | |
| -2.00 | | | | | | | | | | | | | | | | | | | | | | | |
| -3.00 | | | | | | | | | | | | | | | | | | | | | | | |
| -4.00 | | | | | | | | | | | | | | | | | | | | | | | |
| -5.00 | | | | | | | | | | | | | | | | | | | | | | | |
| -6.00 | | | | | | | | | | | | | | | | | | | | | | | |

- NOTE : 1. Lifting capacities are based on ISO 10567.
 2. Lifting capacities shown do not exceed 87% of machine hydraulic capacity or 75% of minimum tipping load.
 3. Capacities marked with an asterisk (*) are limited by hydraulic capacities.
 4. Lifting capacities are based on machine standing on firm, uniform supporting surface.
 User must make allowances for job conditions such as soft or uneven ground.
 5. Lifting capacities shown should not be exceeded. Weight of all lifting accessories must be deducted from the above lifting capacities.
 6. Capacities apply only to the machine as originally manufactured and equipped by KATO WORKS CO., LTD.
 7. The operator should be fully acquainted with the operation manual before operating the machine.

Bucket

| Type of bucket | Backhoe bucket | | | | | Skeleton bucket | Rock bucket | Ripper |
|-------------------------|-----------------------|-------|-------|-------|-------|-----------------|-------------|--------|
| Bucket capacity m³, ISO | 1.4 | 1.6 | 1.8 | 2.0 | 2.3 | - | 1.2 | - |
| Bucket width | w/o side cutters, mm | 1,180 | 1,310 | 1,440 | 1,550 | 1,670 | 1,070 | - |
| | with side cutters, mm | 1,290 | 1,420 | 1,550 | 1,660 | 1,880 | 1,200 | - |
| Bucket weight kg | 1,400 | 1,510 | 1,605 | 1,780 | 1,790 | 1,930 | 1,870 | 1,290 |
| Number of bucket teeth | 4 | 5 | 5 | 5 | 5 | 5 | 5 | 1 |
| Shape of bucket | | | | | | | | |
| Standard boom + | Short arm | | | | | | | |
| | Standard arm | | | | | | | |
| | Long arm | | | x | x | x | x | x |

General purpose Light work Rock digging Loading Usable x Unusable *Usable only when 700mm shoe is fitted on.
 Yellow colored area means standard.

Track Shoes

| Type of shoes | Grouser shoe | | | | | |
|----------------------|--------------|-------|--------|--------|--------|-------|
| Shoe width mm | 600 | 700 | 760 | 800 | 910 | |
| Overall width mm | Extended | 3,580 | 3,680 | 3,740 | 3,780 | 3,890 |
| | Retracted | 3,200 | 3,200 | 3,260 | 3,300 | 3,410 |
| Ground pressure kPa | 82 | 71 | 66 | 63 | 56 | |
| Net weight change kg | S.T.D | +500 | +1,100 | +1,300 | +1,900 | |

Yellow colored area means standard.

Standard Equipment

- New APC mode
- New auto-slow · One-touch-slow
- Multi-mode display monitor
- Adjustable monitor alarm
- 2 service hour meter
- 3 traveling mode
- Automatic travel speed change
- Spring assisted pull-up front window
- 6 points viscous damping cab suspension
- Multi position operator's seat
- Adjustable seat suspension
- Adjustable speed window wiper
- Front window washer (2 sprays)
- Rear emergency escape window
- Cabin light connected to cabin door
- 2 working lights (Upper front right side & Boom left side)
- Main control valve with antidrft valves (Boom and Arm)
- Digging force booster (High power)
- Swing shockless valve
- Automatic swing parking brake
- Automatic travel parking brake
- One free service circuit for attachments
- Fire wall
- Rear view mirror (right side)
- Track guard, 3 pcs each side
- Air cleaner, double element

Optional Equipment

- Tinted transparent hatch
- Seat belt
- Automatic climate control air conditioner
- Hot & cool box contained with AC
- Auto tuning AM/FM radio with clock
- 2 speaker stereo
- Working light (Cab left side)
- Working light (Boom right side)
- Working light (Cab right side)
- Rear view mirror (left side)
- Cab access step
- Optional piping
- Cab front half guard
- Cab front full guard
- Cab head guard
- Electronic horn
- Cabin fan
- Swing warning light
- Travel alarm
- Refueling pump
- Low temperature spec
- Tool set
- Full-length track guard
- Electric lubricator